

**PARTY SANDWICHES**

	<u>SERVINGS</u>
2ft. Sandwich	10-12
4ft. Sandwich	20-25
6ft. Sandwich	30-36

\*All of our party sandwiches are piled high with the finest of meats and cheeses: turkey breast, ham, genoa salami, roast beef, St. Louis Style cheese, lettuce, tomatoes, and onions.

**PARTY TRAYS**

	<u>SERVINGS</u>
Small Meat & Cheese Tray	15
Large Meat & Cheese Tray	30

**SIDE ORDERS**

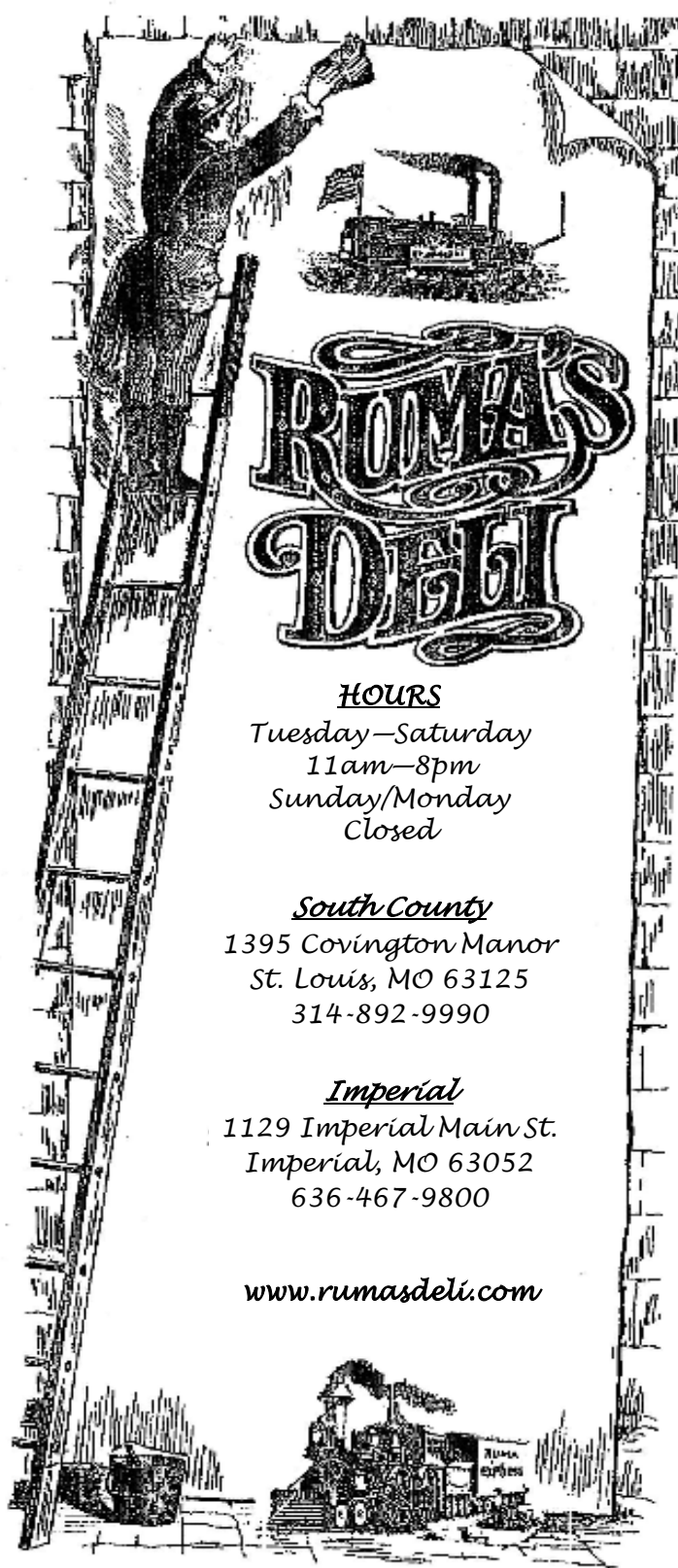
	<u>SERVINGS</u>
1 Gallon Super Salad	12-15
1/2 Gallon Super Salad	6-8
1 Gallon Mostaccioli	12-15
1/2 Gallon Mostaccioli	6-8
1 Gallon Baked Mostaccioli	12-15
1/2 Gallon Baked Mostaccioli	6-8
1 Gallon Mustard Potato Salad	25-30
1/2 Gallon Potato Salad	12-15
1 Gallon Creamy Cole Slaw	25-30
1/2 Gallon Cole Slaw	12-15

▶ When ordering Mostaccioli and Baked Mostaccioli please specify if you would like your items warm and ready to serve or cold with cheese on them or on the side.

▶ Roast beef is served hot with gravy. If you would like it prepared differently please specify when placing orders.

▶ All catering orders require 24 hour notice.

▶ Catering orders for Saturdays or Sundays must be placed before noon on Friday.



**HOURS**  
 Tuesday—Saturday  
 11am—8pm  
 Sunday/Monday  
 Closed

**South County**  
 1395 Covington Manor  
 St. Louis, MO 63125  
 314-892-9990

**Imperial**  
 1129 Imperial Main St.  
 Imperial, MO 63052  
 636-467-9800

[www.rumasdeli.com](http://www.rumasdeli.com)

**PARTY PACKAGES**

	<u>SERVINGS</u>
<b><u>PARTY PACKAGE #1</u></b>	<b>25-30</b>
1-6 foot Party Sandwich	
1 Gallon of Potato Salad	
2 Gallons of Mostaccioli	
<b><u>PARTY PACKAGE #2</u></b>	<b>25-30</b>
1 Large Party Tray	
1 Gallon of Potato Salad	
2 Gallons of Super Salad	
2 1/2 Dozen Dollar Rolls	
<b><u>PARTY PACKAGE #3</u></b>	<b>25-30</b>
6 lbs. Roast Beef	
2 Gallons of Mostaccioli	
1 Gallon of Potato Salad	
<b><u>PARTY PACKAGE #4</u></b>	<b>45-50</b>
5-2ft. Sandwiches	
4 Gallons of Mostaccioli	
2 Gallons of Potato Salad	
<b><u>PARTY PACKAGE #5</u></b>	<b>45-50</b>
2 Large Party Trays	
2 Gallons of Potato Salad	
4 Gallons of Mostaccioli	
6 Dozen Dollar Rolls	

**MEAT & MISC. EXTRA ITEMS**

	<u>SERVINGS</u>
Roast Beef	5-6
Ham	5-6
Genoa Salami	7-8
Turkey Breast	5-6
St. Louis Style Cheese	10
Gallon of Meat Sauce	30
Toasted Ravioli	25 pieces
	50 pieces
Pepperoncinis	(Pint)
Pickles	(Pint)
Salad Dressing/Gravy/Sauce	(Pint)
Dozen Dollar Rolls	
Extra Cheese	